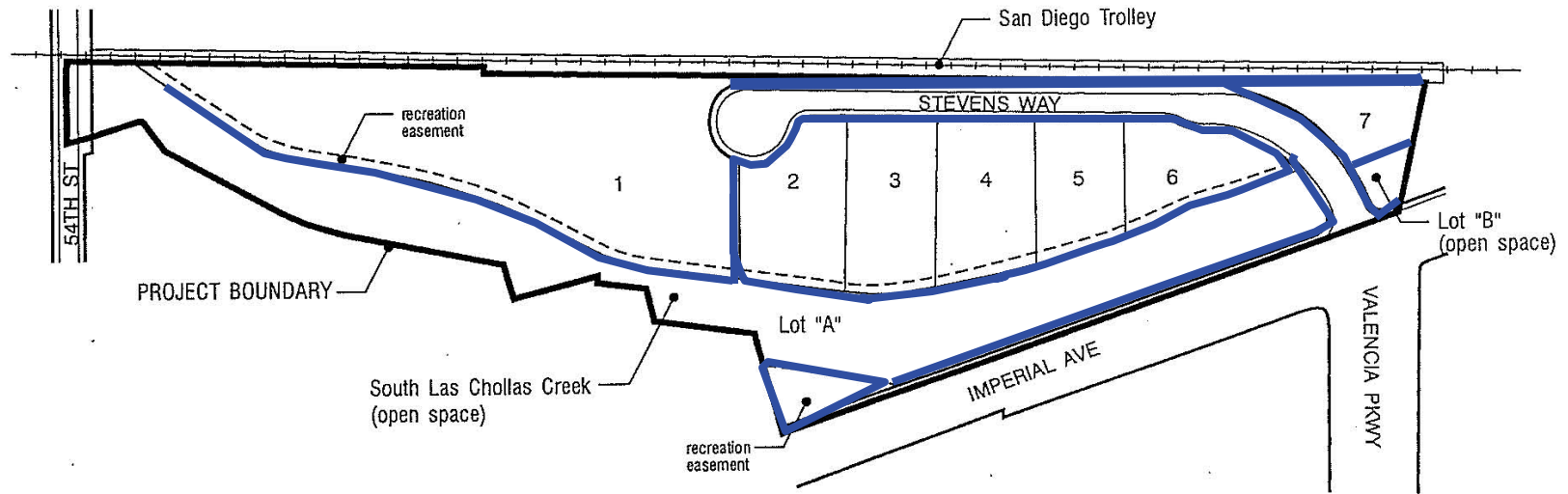


# EXHIBIT 3 Site Plan Landscaped Area



### Site Data

Project Area: 15.27 acres  
 - Industrial; 8.22 acres  
 - Open Space; 4.76 acres  
 - Streets; 2.29 acres

Zoning: I-1\*  
 Buildable Lots: 7

Outline of landscaped



No Scale

\*per the Southeastern San Diego Planned District  
 Sec. 103.1708 San Diego Municipal Code



LEGEND

-  San Diego Trolley
-  Landscaped area



June 20, 2007

Valencia Business Park Lots 2-7  
Aerial Map

